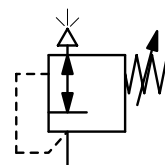


Description	Back pressure regulators protect pneumatic devices against overpressure. If the pressure exceeds the setpoint, the pressure valve exhausts to the atmosphere until the pressure level is below the setpoint. It is advisable to select the pressure range as near as possible to the maximum setpoint.		
Media	compressed air or non-corrosive gases		
Overpressure	max. 30 bar		
Adjustment	by plastic knob with snap-lock for DBC-01, by handwheel for DBC-02 to -04 by T-handle with locknut for DBC-06 to -16		
Gauge port	G½ at DBC-01, G¼ from DBC-02 on, on both sides of the body, screw plugs supplied		
Mounting position	any		
Temperature range	0 °C to 60 °C / 32 °F to 140 °F (DBC-01 to -04), 0 °C to 80 °C / 32 °F to 176 °F (DBC-12 and -16), for appropriately conditioned compressed air down to -20 °C / -4 °F		
Material	Body: aluminium Diaphragm: NBR/Buna-N with PTFE coating O-rings: NBR/Buna-N, optionally FKM or EPDM Inner valve: brass		



G½ up to G2
0.1 ... 1.5/15 bar

Dimensions			Regul. system	Relief	Over-	Connection	Adjustment	Order
A	B	C	D: diaphragm	capacity	pressure	thread	range	number
mm	mm	mm	P: piston	l/min*1	max. bar	G	bar	



Aluminium back pressure regulator

overpressure max. 30 bar

DBC

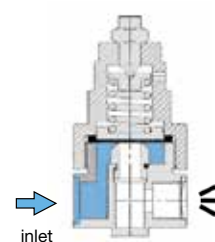
40	78	13	D	200	30	G½	0.2 ... 1.5	DBC-01A
							0.3 ... 3.0	DBC-01B
							0.8 ... 8.0	DBC-01D
							1.5 ... 15	DBC-01E
40	78	13	D	200	30	G¼	0.2 ... 1.5	DBC-A2A
							0.3 ... 3.0	DBC-A2B
							0.8 ... 8.0	DBC-A2D
							1.5 ... 15	DBC-A2E
78	166	33	D	400	30	G¼	0.2 ... 1.5	DBC-02A
							0.3 ... 3.0	DBC-02B
							0.8 ... 8.0	DBC-02D
							1.5 ... 15	DBC-02E
78	166	33	D	500	30	G¾	0.2 ... 1.5	DBC-03A
							0.3 ... 3.0	DBC-03B
							0.8 ... 8.0	DBC-03D
							1.5 ... 15	DBC-03E
82	175	38	D	2200	30	G½	0.2 ... 1.5	DBC-04A
							0.3 ... 3.0	DBC-04B
							0.8 ... 8.0	DBC-04D
							1.5 ... 15	DBC-04E



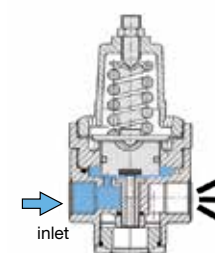
DBC-01/-A2



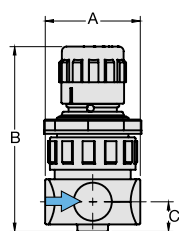
DBC-04



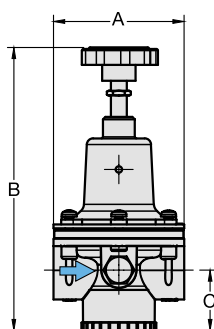
cross-section with diaphragm (D)



cross-section with piston (P)



DBC-01/-A2



DBC-02/-03/-04

*1 at 7 bar overpressure and open outlet

Gauges: see chapter for measuring devices

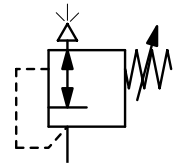
PDF CAD
www.aircom.net

* Product group



Order example:
DBC-01A

Description	Back pressure regulators protect pneumatic devices against overpressure. If the pressure exceeds the setpoint, the pressure valve exhausts to the atmosphere until the pressure level is below the setpoint. It is advisable to select the pressure range as near as possible to the maximum setpoint.		
Media	compressed air or non-corrosive gases		
Overpressure	max. 30 bar		
Adjustment	by plastic knob with snap-lock for DBC-01, by handwheel for DBC-02 to -04 by T-handle with locknut for DBC-06 to -16		
Gauge port	G½ at DBC-01, G¼ from DBC-02 on, on both sides of the body, screw plugs supplied		
Mounting position	any		
Temperature range	0 °C to 60 °C / 32 °F to 140 °F (DBC-01 to -04), 0 °C to 80 °C / 32 °F to 176 °F (DBC-12 and -16), for appropriately conditioned compressed air down to -20 °C / -4 °F		
Material	Body: aluminium Diaphragm: NBR/Buna-N with PTFE coating O-rings: NBR/Buna-N, optionally FKM or EPDM Inner valve: brass		



G½ up to G2
0.1 ... 1.5/15 bar

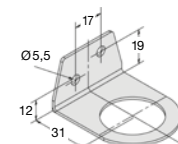
Dimensions			Regul. system	Relief capacity	Over-pressure	Connection thread	Adjustment range	Order number
A	B	C	D: diaphragm P: piston	l/min*1	max. bar	G	bar	
mm	mm	mm						



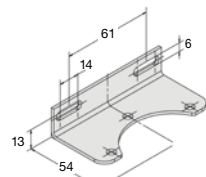
Aluminium back pressure regulator						overpressure max. 30 bar	DBC	
174	283	35	P	25000	30	G1½	0.2 ... 1.5	DBC-12A
							0.3 ... 3.0	DBC-12B
							0.8 ... 8.0	DBC-12D
							1.5 ... 15	DBC-12E
174	283	35	P	25000	30	G2	0.2 ... 1.5	DBC-16A
							0.3 ... 3.0	DBC-16B
							0.8 ... 8.0	DBC-16D
							1.5 ... 15	DBC-16E



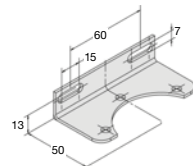
DBC-12/-16
accessory pressure gauge



BW30-02



BW00-44



BW00-63S

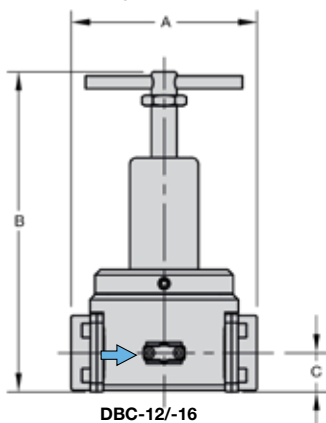
Special options, add the appropriate letter

NPT	connection thread	from G¼ (02)	DBC-... N
FKM o-ring	PTFE-diaphragm		DBC-... V
EPDM o-ring	PTFE-diaphragm		DBC-... E
flange connection	according to EN-1092-1 or ASME B16.5	on request	DBC-... F.

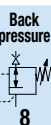
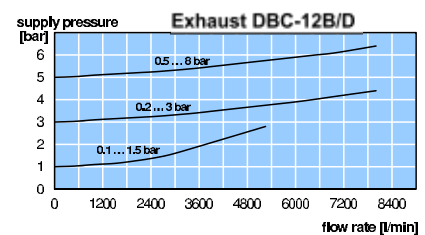
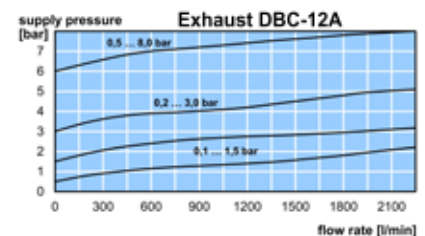
Accessories, enclosed



pressure gauges	Ø 50 mm, 0...*2 bar, G¼	for G¼	MA5002-...*2
pressure gauges	Ø 63 mm, 0...*2 bar, G¼	from G½	MA6302-...*2
mounting bracket	made of steel	for G½ and G¼ (A2)	BW30-02
mounting nut	made of aluminium	for G½ and G¼ (A2)	M30x1,5A
mounting bracket	made of steel	for G¼ (02) to G½	BW00-44
mounting bracket	made of stainless steel	for G½ and G2	BW00-63S



DBC-12/-16



*1 at 7 bar overpressure and open outlet

*2 02 = 0...2.5 bar, 04 = 0...4 bar, 06 = 0...6 bar, 10 = 0...10 bar, 16 = 0...16 bar

Gauges: see chapter for measuring devices

PDF CAD
www.aircom.net

* Product group



Order example:
DBC-06A